

VIDEO MANAGEMENT SOFTWARE

Full Product Specifications



Introduction

See the Bigger Picture with VIEW

LENS introduces VIEW, an advanced video management software designed to meet the needs of large-scale, mission-critical enterprise applications. Developed to handle complex deployments, VIEW supports unlimited cameras, servers, users, and video analytics, depending on licensing.

In today's world, organizations face an avalanche of video footage, far more than just storage can handle. What they need are tools that transform this raw data into meaningful insights. That's exactly why VIEW was created: a platform that effortlessly manages vast deployments while offering intelligence that goes beyond the surface.

What sets VIEW apart is its intelligence. Developed through years of R&D in computer vision, video computing, artificial intelligence, and machine learning, the system leverages advanced AI-powered video analytics.

With VIEW, LENS raises the bar in video management—because managing video data shouldn't just be about keeping an eye on things. It's about seeing the bigger picture.

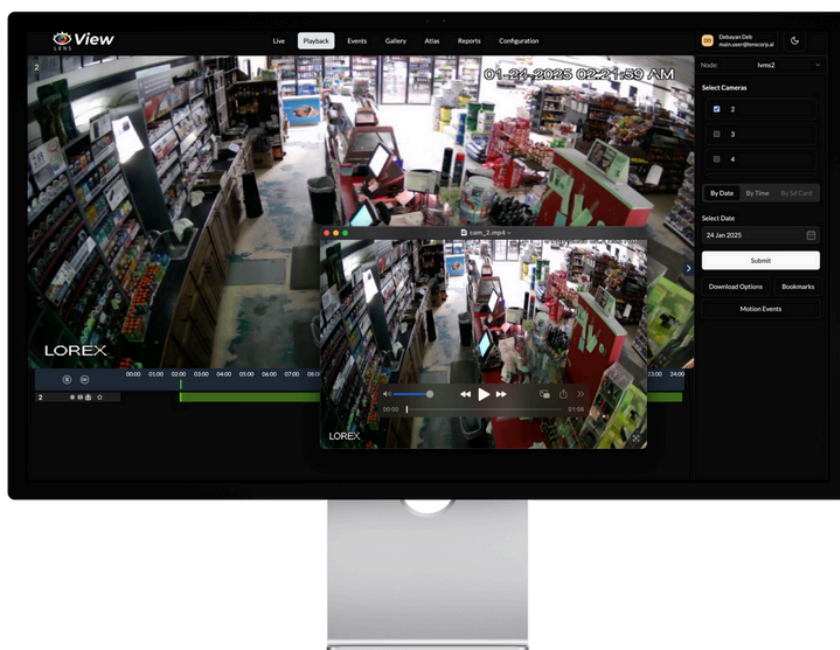
Purpose of The Document

The purpose of this document is to provide a detailed overview of the technical specifications and features of the LENS VIEW. It serves as a reference for customers, partners, and internal teams to understand the system's capabilities, configuration options, and compatibility with various hardware and network environments. This document outlines the key functionalities, supported formats, storage solutions, and security features of the VIEW, helping users make informed decisions about deploying or integrating the system into their surveillance and monitoring setups.

Full Product Specifications

Comprehensive Recording Capabilities

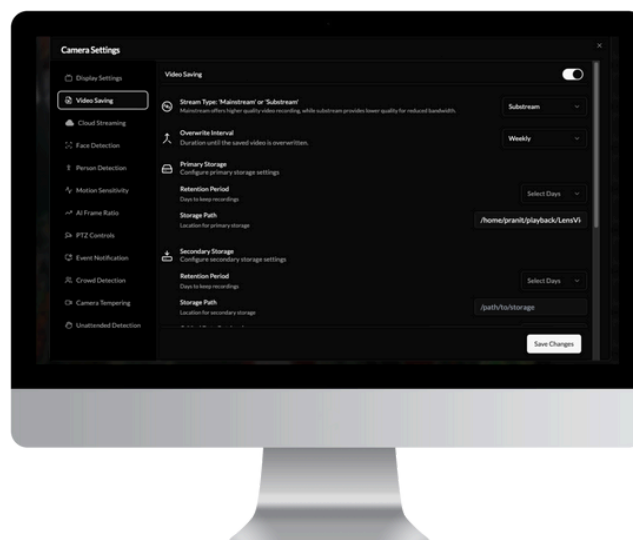
- Records in H.264, H.265, MPEG4, or MJPEG formats with a minimum of 25 fps at Full HD (1080p) resolution, maintaining up to 90 days of video retention.
- Dual streaming capabilities, allowing different quality recordings for efficient bandwidth management.
- Supports various streaming transport modes including RTP over UDP, RTP over RTSP, RTP over HTTP, and RTP over multicast, ensuring smooth data transmission even in low network bandwidth environments.
- Fully compatible with a wide range of IP cameras and encoders from various vendors.
- Supports DAS, NAS, IPSAN, and direct storage, enabling centralized NVR management with video search, playback, management, and downloads.
- Clips can be edited, with auto-save for others, editable name/description, export time slider showing devices, and adjustable times, with added devices saved to the storyboard.
- Allows saving with descriptions and comments, which are exported in HTML format and displayed as subtitles to viewers in the storyboard.
- Export time slider auto-populates with devices, allows additions, and saves clips with comments as subtitles.
- Supports all video resolutions from CIF to 20MP HD.



Full Product Specifications

Comprehensive Recording Capabilities

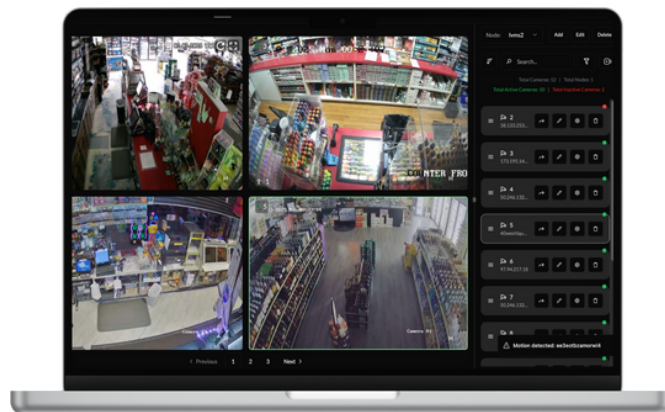
- Offers multi-drive storage options, including NAS, iSCSI, DAS, or local/network drives, with flexible recording paths per camera.
- Stores audio and video together in the same file for a complete record of events.
- Supports H.264, H.265, MPEG-4, MJPEG compression
- Supports RAID-based(RAID 5/6 or better) storage solutions
- Provides programmable pre-buffer and post-buffer recording features ranging from 10 seconds to 60 minutes for enhanced event capture.
- Automatically calculates storage requirements based on camera count, days of retention, and available storage.
- Opens the preview in a resizable full-screen window, with storyboard drafts that can be saved or loaded using the "Save draft..." and "Load draft" buttons, respectively.
- Supports SD card recording retrieval for ONVIF G Profile cameras.
- Supports optimized H.264/H.265 decoding with Intel Media SDK for enhanced performance.
- Includes recording servers for video storage, camera communication, and playback.
- Color invert filter supports both color and black-and-white modes.



Full Product Specifications

Comprehensive Recording Capabilities

- Records at lower frame rates during non-alarm conditions, switching to higher frame rates during alarms with configurable post-alarm recording up to 5 minutes.
- Enables low-bitrate stream transcoding at the recording server.
- Advanced AI-based motion detection and event tagging for more precise recording and efficient video searches.
- Supports event-based video synopsis export.
- Dynamic storage management ensures intelligent allocation based on camera usage patterns.
- Creates a movie-like experience from surveillance footage with sequential or real-time playback, comment addition, subtitle control, continuous replay, and draft sharing.
- Camera setting changes restart only the affected camera, ensuring uninterrupted recording.
- Supports Nvidia H.264 decoding for improved efficiency and reduced CPU load.
- Supports backup and restoration of recorder server configuration.
- Calculates storage needs based on camera count, retention days, and available drives at Full HD (1080p) & 25 FPS



Full Product Specifications

Comprehensive Recording Capabilities

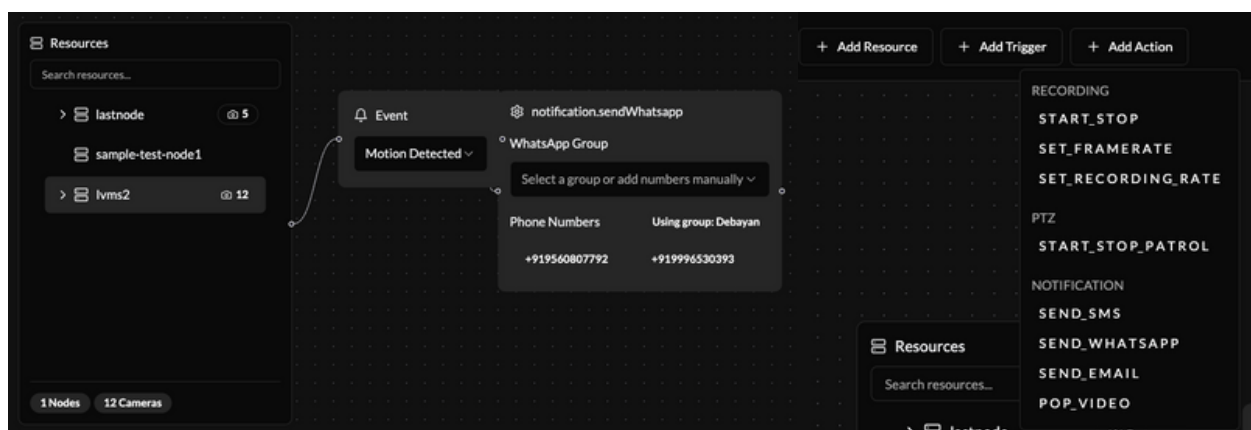
- Exports video recordings in .avi and .mp4 formats for easy playback across Windows, Linux, macOS, and Unix.
- Supports secure, authenticated export to both client and remote PCs.
- Features robust alarm triggers, including window pop-ups, email, and sound notifications for recording or video loss events.
- Allows PTZ cameras to automatically shift to pre-configured presets upon alarm triggers, improving situational awareness.
- Uses AI-based analytics to improve image quality in challenging conditions like fog, rain, and low light.
- Supports multiple recorder servers and simultaneous camera display from different recorders on one monitor.
- Client apps support IP Multicast (RTP) and Unicast (TCP/RTP) streaming based on network capabilities.
- Estimates recording size per hard disk and allows checking disk usage for individual cameras.



Full Product Specifications

Comprehensive Recording Capabilities

- Automatically archives videos older than 90 days, managing storage efficiently with FIFO deletion.
- Ensures encryption for secure communications between clients and servers, with optional password protection or digital signatures for file integrity verification.
- Undergoes regular security audits and holds a Security Clearance Certificate, ensuring OWASP-compliant cybersecurity protection
- Exported videos are saved in Secure Export Format for a secure non-tampered file system.
- Multiple Secured Streaming Options (256-bit AES Encryption, Digital Certificates, Multi-Stream Control)
- Can share primary, secondary, third, or any combination of streams to save bandwidth.
- Supports SRTP for secure media encryption.
- Supports tamper-proof video export.
- Ensures end-to-end security with 256-bit AES encryption for all communications, 4096-bit RSA with SHA-384 hashing for tamper-proof data, SEF export format with a 24-character password, and dual-password authentication for users.
- Allows exporting recorded video to USB drives, DVDs, and external hard disks.



Full Product Specifications

Comprehensive Recording Capabilities

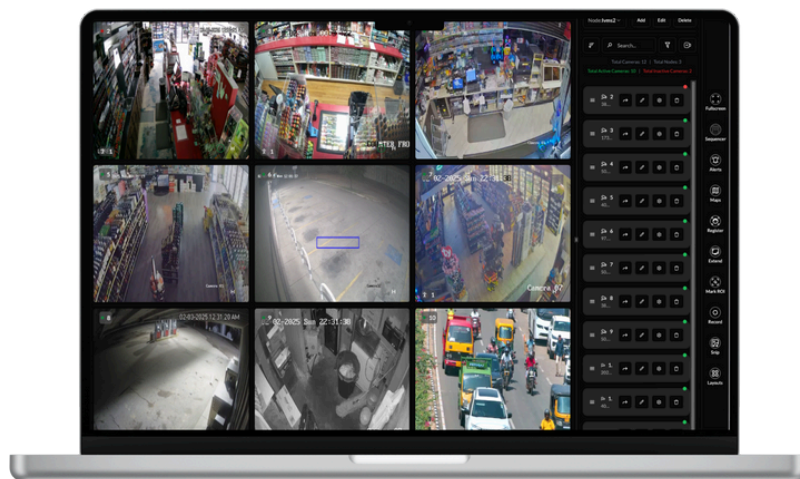
- In case of server disconnection, cameras record locally and automatically sync once connectivity is restored, requiring no manual intervention.
- Supports cloud-based storage solutions alongside traditional storage.
- Select between device storage or server storage for recordings.
- Provides email and pop-up alerts for low disk space to ensure continuous operation.
- Export videos in AVI, MP4, WMV, MKV, SEF, or ASF with digital signing and password protection, along with audio clips, text clips, and storyboards.
- Includes a file export tool for single-frame images and video files((BMP, GIF, MP4, SEF, etc.)
- Thru Cast (Direct Streaming from Camera to Client Without VMS Server Involvement)
- Enables creation, export, and sharing of incident clips (labels, descriptions, comments, SEF format, dual password).
- Allows quick review of recorded video.
- Allows simultaneous recording, live monitoring, playback of archived video, audio, and data, network transmission, and changes to settings.
- Users can export, print, view, and create still image archives.
- Supports searching recorded videos by date, time, event, camera, location, alarm, or motion detection.
- Supports multi-live streaming, multicasting, Thru-Cast, and RTP transport for efficient bandwidth and 10,000-viewer scalability.



Full Product Specifications

Live View, Playback & PTZ Control

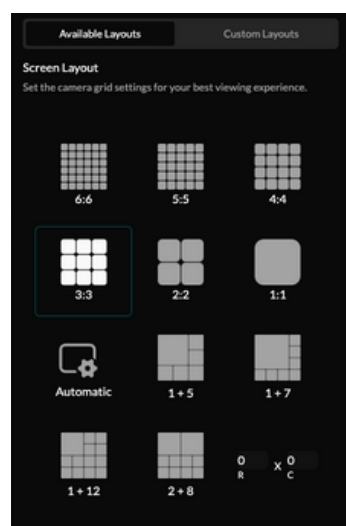
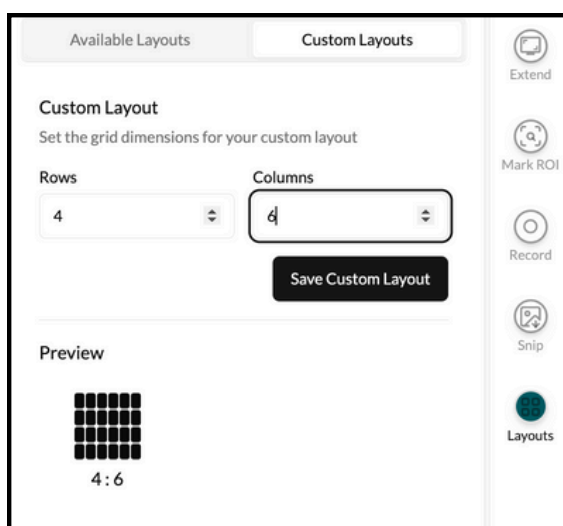
- Supports up to 1024 live videos and up to 64 playback videos simultaneously on one screen or multiple monitors using software video wall.
- The VMS supports native camera FPS (including 25, 30, etc. but can also be configured), supports 30 FPS & all resolutions
- Supports dynamic and predefined video display layouts, including Full screen, 2x1, 2x2, 3x3, and more.
- Utilizes two simultaneous streams from the camera, with automatic switching to high-resolution stream in full-screen mode.
- Intelligently captures any of the two streams only when required, optimizing resource utilization.
- Search vehicle pictures by type (normal, illegal, armed), with auto play and delay options.
- Multi-monitor support for extended camera viewing.
- Allows dynamic connections between cameras and workstations to view live or recorded video on digital monitors.
- Auto-switch shall allow displaying the videos according to the rules set by the user, which can be set as auto-switch in one group, auto-switch among groups, or combined auto-switch or scheduled auto switch.
- The system is able to remotely control the PTZ functions, including rotation, auto scan, zoom in, zoom out, preset settings, patrol settings, and so on. Set the speed dome will automatically go to the preset to perform monitoring.



Full Product Specifications

Live View, Playback & PTZ Control

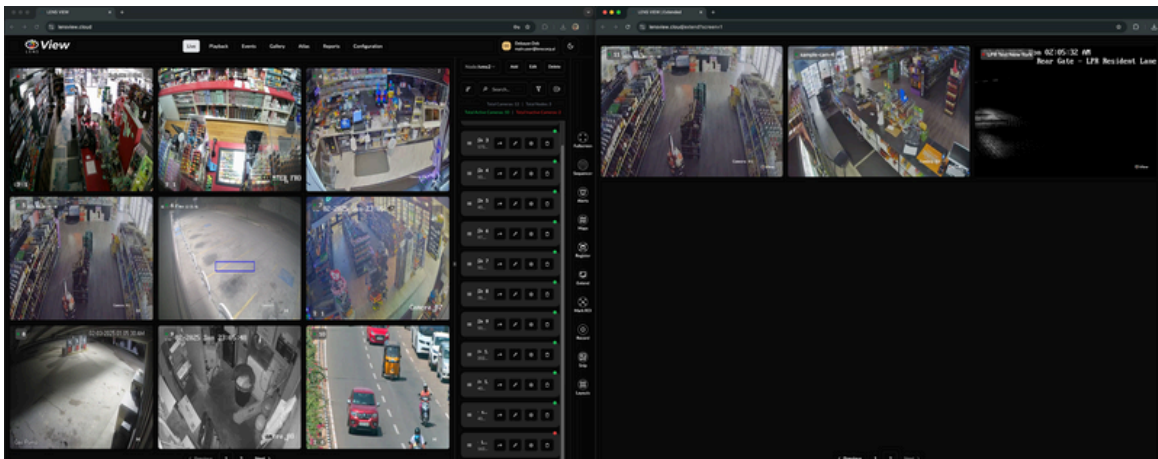
- VMS server and client software support capturing multicast streams from cameras.
- Users can share layouts, and they are visible to all users with the same profile.
- Allows creation of multiple camera sequences with adjustable dwell times.
- Users can create, close, resize, control windows, and access **About** for help.
- Captures live video from the server or camera directly, without extra bandwidth usage.
- Supports simultaneous recording, live monitoring, and playback of video, audio, and data, with live view and playback for at least 10 local or remote clients.
- Supports Virtual Matrix for building video walls & matrices with separate display & operator console servers.
- Automatically zooms and tracks objects in real time.
- Adjusts and auto crops camera views for optimal framing.
- Allows direct control of camera bitrate, quality, FPS, and resolution from the VMS System Manager
- Users can open, close, rename, and adjust tab grids.
- Users can adjust camera, cast, streaming, and display settings or close the camera.
- Offers customizable camera views with user-defined cameras, shape, size, sequencing, and configurable rows and columns.



Full Product Specifications

Live View, Playback & PTZ Control

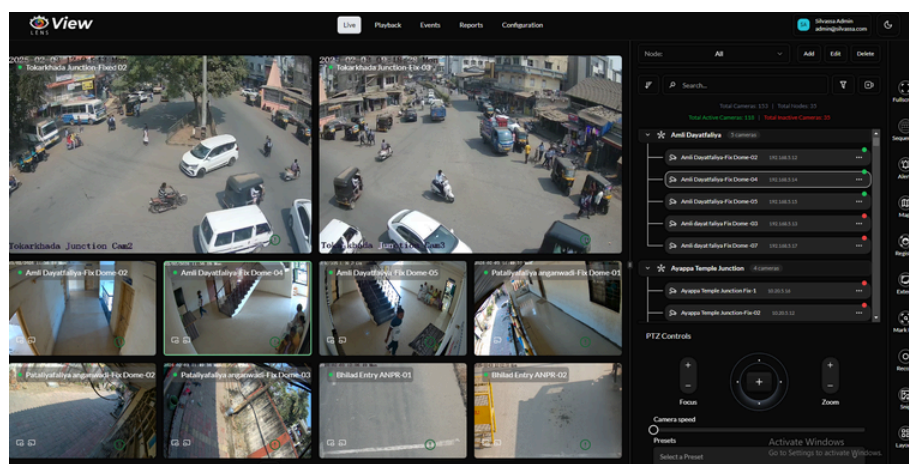
- Supports Pan, Tilt, Digital Zoom, full-view, zoomed display, snapshot zooming, and PTZ focus indicator.
- GUI provides easy monitoring with menu, profile control, device tree, playback, camera control, and alarms in one window.
- Supports PTZ controls via Spotter Web Mobile, including zoom, focus, and presets.
- Supports multiple-view layouts with dynamic camera view switching & shared user access.
- The real-time live view displayed in 1/4/6/9/13/16 windows through the C/S or B/S clients.
- Users can toggle between original size and full-screen video display.
- Users can edit dome camera tours, presets, and home position.
- Auto-switch videos based on user-defined rules, within groups or scheduled.
- Graphical User Interface (GUI) with Centralized Controls (Menu, Profile, Device Tree, Timeline, Alarms, Camera Controls, etc.)
- Features advanced activity search for quick event detection and clip retrieval.
- Allows one-click export, including time slider clips, with built-in player.
- Supports sequential, all-camera, and manual playback modes.
- Allows saving bookmarks with descriptions for video, audio, and text.
- Scalable UI with simultaneous full and zoomed-in views.
- Bookmarks can be exported to a storyboard.
- Supports 32 synced channels and multichannel export with video, audio, & text.



Full Product Specifications

Live View, Playback & PTZ Control

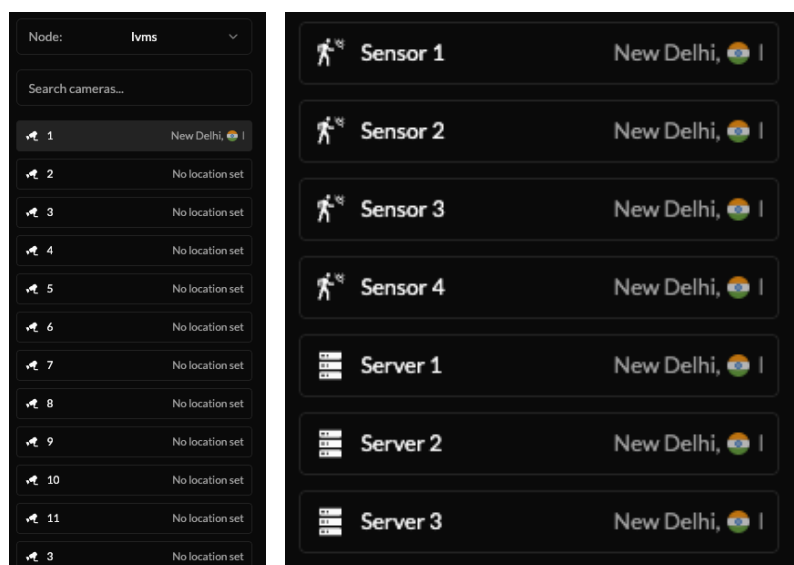
- PTZ controls include mouse/joystick support, gaming/PTZ joystick compatibility, on-screen control with Click-and-Zoom, and preset/tour settings.
- Features digital zoom for fixed and PTZ cameras, activated on any client workstation, moves with the mouse cursor, and doesn't affect video recording.
- Camera Toolbar with Export, Print, Zoom, Audio Control, 360° De-Warping, Image Controls, and Plug-Ins
- Users can export the storyboard or clips, with the Player app included. Sequential mode plays clips in order, and manual mode lets users select cameras.
- Enables system control via mouse, keyboard, or CCTV keyboard, with area zoom and click-to-center for PTZ cameras.
- Supports multi-streaming cameras, automatically selecting the best stream based on grid cell resolution.
- Allows storyboard creation by selecting the first clip via the camera toolbar, drag-and-drop, or right-click from the alarm list.
- Users can define, store, and recall custom layouts, including window dimensions, positions, image filters, and active profile data.
- Intelligently selects the optimal stream based on grid resolution
- Supports both dark and light UI themes.
- Allows users to select camera events, adjust export times, and add clips via toolbar controls, drag-and-drop, or right-click from the alarm list.



Full Product Specifications

Live View, Playback & PTZ Control

- Instant playback pop-ups are available on event click.
- Enhancement analytics available in playback, offering:
 - Video sharpening, brightness and contrast adjustment.
 - Color switching (black & white or color).
 - Edge detection on/off.
 - Custom text addition and print support.
- Advanced Image Control Plug-In (Edge Highlighting, Histogram, Noise Reduction, De-Interlacing, Flip, Mirror)
- Real-time event search functionality integrated within live and playback views.
- Automatic camera grouping feature that intelligently categorizes cameras based on location.
- Supports live view switching via RTSP (thin client) and HTTP (thick client).
- Controls PTZ, iris, focus, presets, and dome patterns.
- Supports device search within the device tree.
- Allows multi-camera searches across specified parameters.
- Allows quick detection and export of the last 25 events with Advanced Activity Search.



Full Product Specifications

Live View, Playback & PTZ Control

- Playback Navigation View includes:
 - Recording server and camera list.
 - Calendar displaying recorded video availability for each day.
 - 24-hour timeline indicating recorded video availability.
 - Detailed 10-minute timeline for finer navigation.
 - Clicking on a timeline point instantly plays a video from the corresponding timestamp.
- Supports a video lock feature for secure playback.
- Allows event-based timeline visualization with colored markers.
- Users can view, save, share, and manage bookmarks and tab content, including shared and password-protected items.
- Supports concurrent recording, monitoring, and playback
- Controls playback with play, pause, forward, and speed buttons.
- Supports closing the component bar and switching modes.
- Users can view alarms, activity, playlists, device tree, descriptions, tabs, menu bar, status messages, and connection status.
- Supports H.265 streaming for Live & Playback.



Full Product Specifications

Live View, Playback & PTZ Control

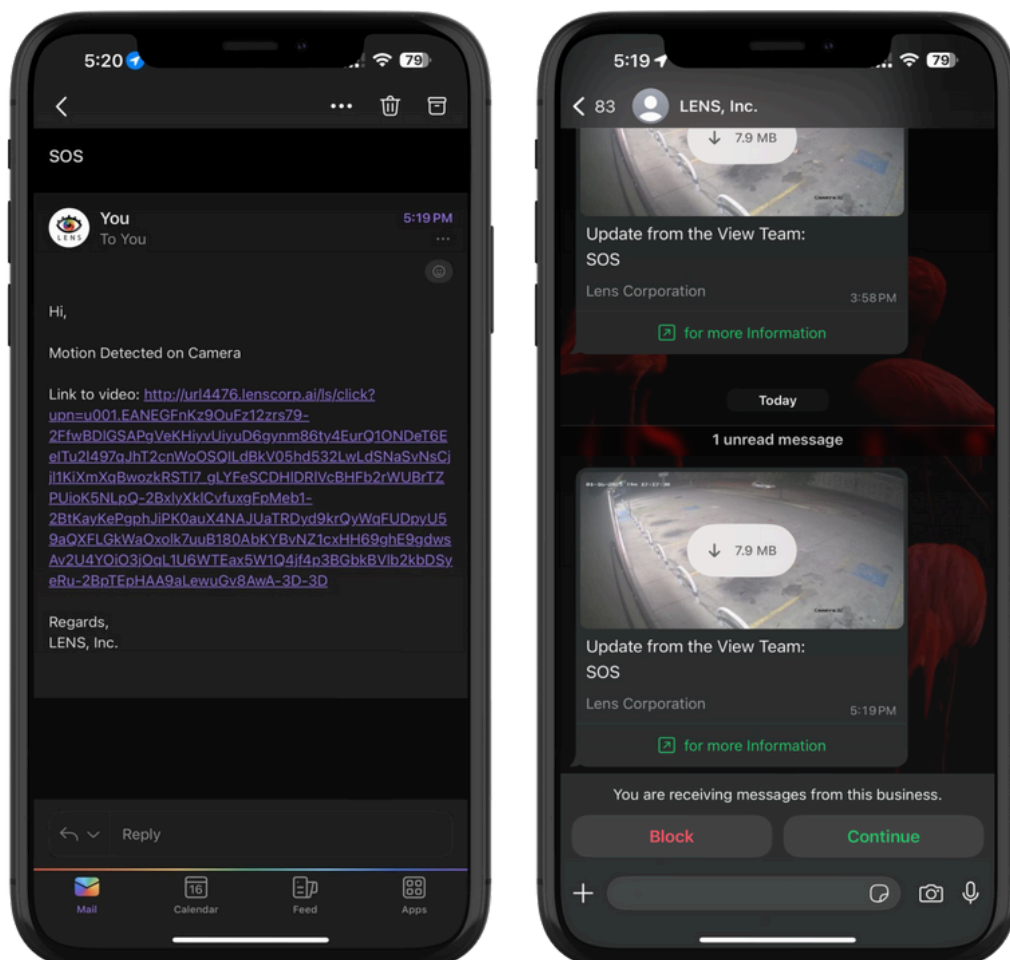
- Two-way audio communication between cameras and VMS, with the ability to send or broadcast audio to multiple cameras, mute, adjust volume, and close audio.
- Supports three audio communication modes: Closed Mode (audio channels remain off), Listen Mode (users can hear audio but cannot transmit), and Talk Mode (users can communicate from the client station to the camera).
- Simultaneous Client Operations Without Affecting Archive Server Performance (Live View, Playback, PTZ, Maps, Alarms, I/O Control, etc.)
- Export searched results as pictures, data, or both in customizable formats.
- 60 FPS Camera Support with Automatic Frame Rate Selection
- Users can view, manage, share, and schedule their layouts.
- Enables audio playback alongside video, and the monitor supports multiple audio layouts with collections of clips.
- Enables playback of audio mixed from live and recorded sources, with independent volume control and mute options.



Full Product Specifications

Web-based Surveillance & Remote Viewing

- Ability to view live video from mobile devices (iOS/Android) with up to 25 concurrent users, even without proprietary apps.
- Receive SMS and push notifications for critical alerts on mobile devices.
- Full PTZ control is available via both the mobile app and remote locations.
- VMS and Mobile App support for multiple sites across WAN, centralized control and viewing.
- Internet Gateway for Remote Access to Live & Playback Video, PTZ, and Digital I/O
- Supports GIS Layer & OSM Layer; Autocad (.dwg), Live Video Grid available.



Full Product Specifications

Web-based Surveillance & Remote Viewing

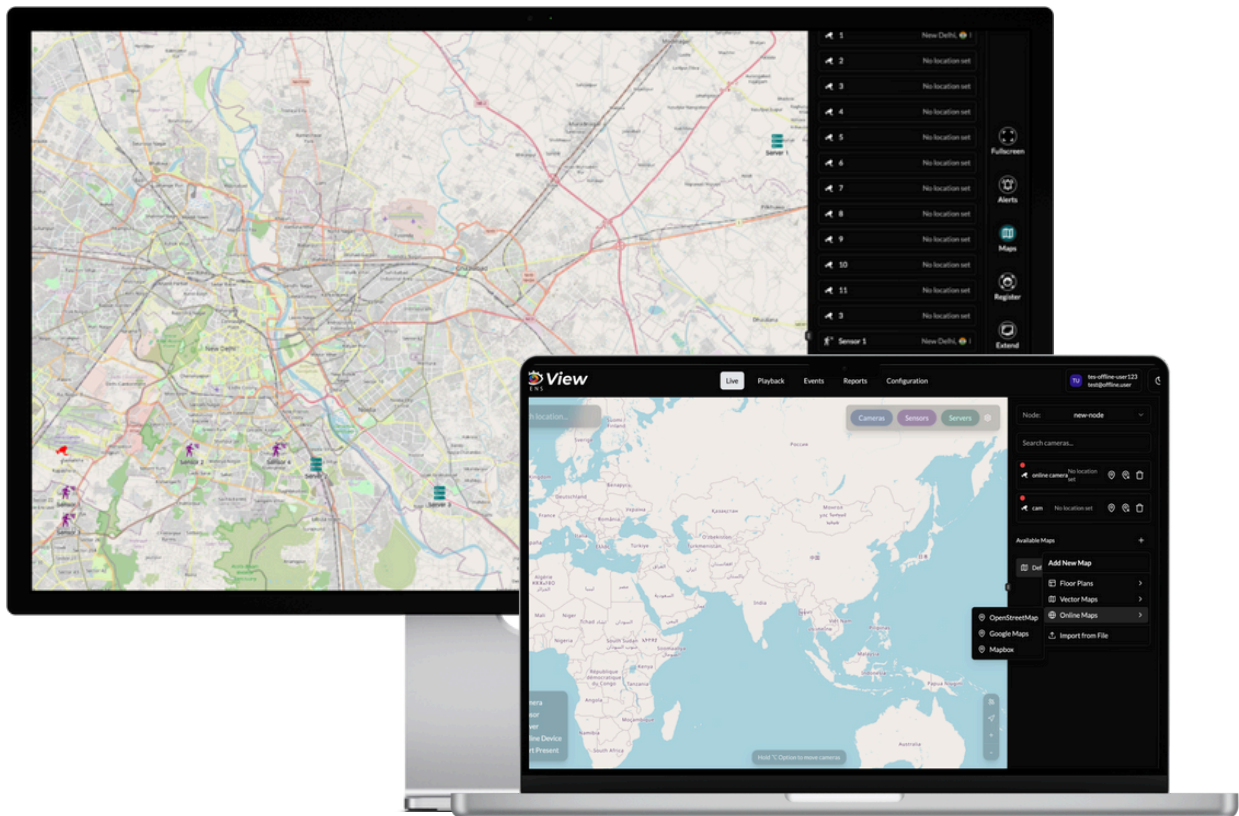
- Remote administration via the Internet.
- Supports browser-based viewing.
- Remote diagnostic and troubleshooting tools for administrators.
- Encrypted mobile access, ensuring all data is protected during transmission.



Full Product Specifications

Advanced E-Map Navigation

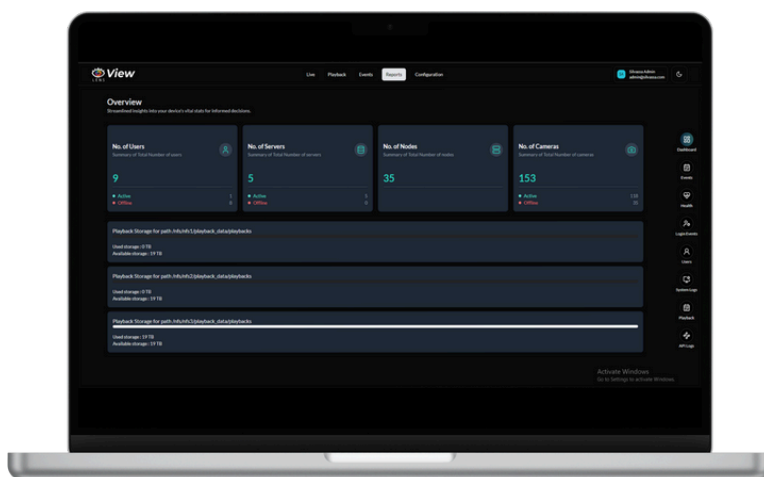
- Supports two types of E-Maps: third-party GIS-based or JPEG-based for independent management.
- Displays spatial positions of cameras, checkpoints, and E-Police locations for easy navigation.
- Supports map presets for quick region switching and camera view coverage display for efficient monitoring.
- Enables vehicle search by license plate and time period with history playback.
- Shows detailed information and images of passing vehicles.
- Supports Graphical Site Representation (Maps) to display camera and device locations with clickable hyperlinks for map interlinking and camera selection.
- Allows advanced analytics and full camera calibration capabilities, including field of view, height, horizontal line, virtual mimics, and ruler, to minimize false alarms.



Full Product Specifications

Intelligent Alarm Management

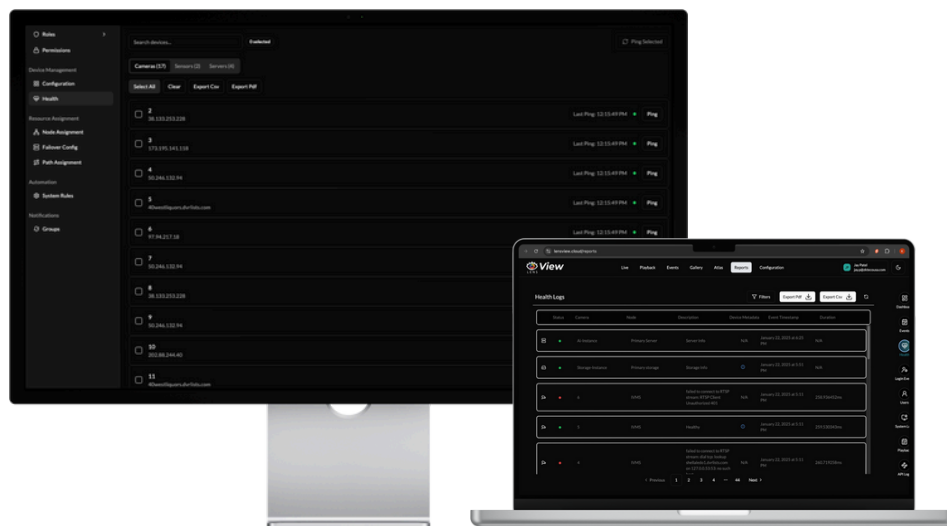
- Customizable alarm schedules with priority levels and multi-linkage options.
- Supports camera, device, IO, and server alarms.
- Supports recording, alerts, dome control, outputs, acknowledgments, comments, and customization.
- Generates detailed alarm reports for quick response and analysis.
- Alarm Management Server logs events, processes I/O alarms, and triggers automated actions like alerts and PTZ presets.
- Displays cameras only on alarm, auto-resizing matrix grid for multiple alerts.
- Alarms are highlighted in yellow/red in the device tree and Profile Maps.
- Users can control and close digital input/output and text data devices.
- Alarms appear on the time slider with auto-grouping upon zoom.
- Alarm settings are adjustable via the activity panel.
- Supports "New Alarm First," rotation, and back-and-forth circulation.
- Allows silencing alarms for 5 minutes to 24 hours to reduce false alerts.
- Assigns priority levels and directs alarms to specific users instead of all.
- Users in the same group can manage and view assigned alarms in real time.
- Maintains a single alarm stack across multiple recording servers.
- Users can add comments to alarms for context and tracking.
- Triggers alarms for motion, audio changes, text data, external signals, feed loss, third-party, and VCA events.
- Assigns priorities, routes alarms to specific users, allows group management, and consolidates alarms across servers.



Full Product Specifications

Proactive System Management

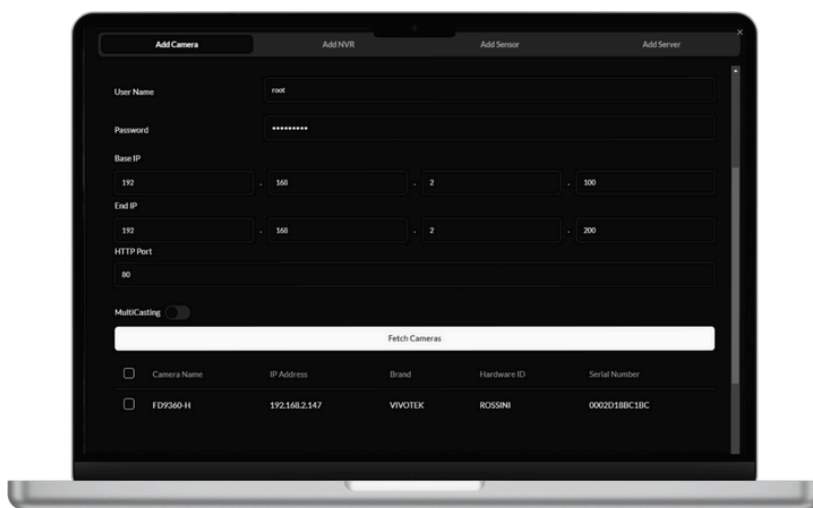
- Automates time sync, backups, reboots, and health checks.
- Features an inbuilt secure data distribution method for fault tolerance.
- Provides a centralized interface for device monitoring and management.
- Tracks real-time server status with categorized performance metrics.
- Monitors device status across organizational units for seamless control.
- Tracks live user sessions with login details, IP, and duration.
- Generates logs & reports in graphical/tabular formats with PDF & Excel export.
- Provides a unified interface for managing security across all monitored sites.
- Provides real-time status of recording servers and storage.
- Supports automatic stream reset and manual reload/closure.
- Supports report generation with export to PDF, Excel, and more.
- Real-time system diagnostics with device status indicators (Normal, Recording, No Signal, Offline, Connecting, Disconnected)
- Provides Pre-Failure Alerts (CPU, RAM, RAID, HDD, NIC, Power Supply)
- Continuously monitors NVRs, cameras, storage, & servers for optimal performance.
- Enters low-latency mode when CPU exceeds 85%, activating optimization modules.
- Instantly detects and reports NVR HDD errors to prevent data loss.
- Real-time monitoring of all NVR cameras with uptime, downtime, and disconnection reports.



Full Product Specifications

Administration & System Management

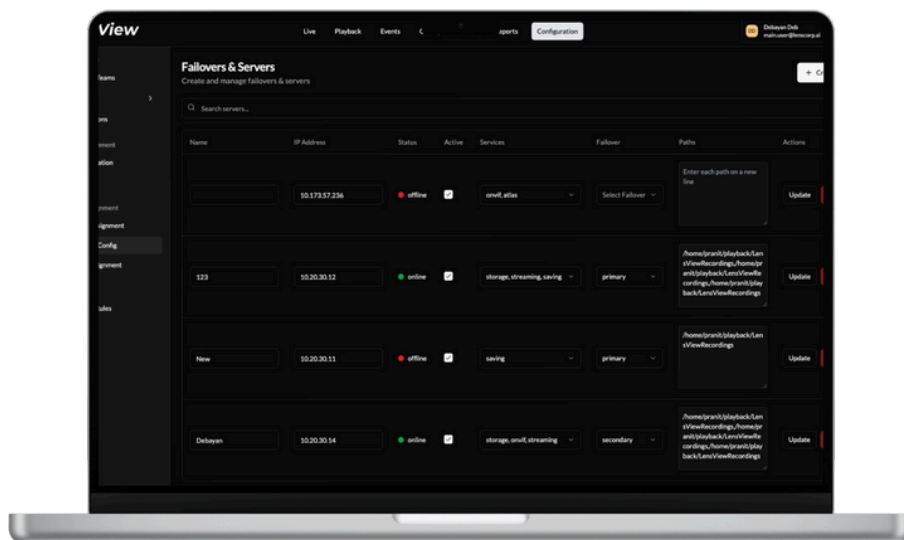
- Auto device discovery via UPnP/ONVIF for seamless integration.
- Supports open architecture with non-proprietary hardware, network, and storage.
- Supports SRTP for secure media encryption
- No software limit on cameras per recording server.
- Admins can manage users, devices, streams, & system settings via the VMS Configuration Client.
- Admins can grant users access to controls, devices, streams, system settings, plugins, and profile changes in the VMS app and client GUI.
- Add all cameras with a single click and apply settings to multiple cameras of the same model at once.
- Automatic failover within 30-45 seconds; recordings auto-sync when the primary server restores.
- Unique, unmodifiable usernames with complete operation logging for internal review.
- Supports face blurring, moving object blurring, and privacy zones, configurable under System configuration, with privacy features in exported clips.
- Scalable client-server architecture, compatible with Windows Server 2016/10, supports keyboard, mouse & DirectX joystick.
- Restricts access by binding login to a designated computer, preventing unauthorized logins from other devices.



Full Product Specifications

Administration & System Management

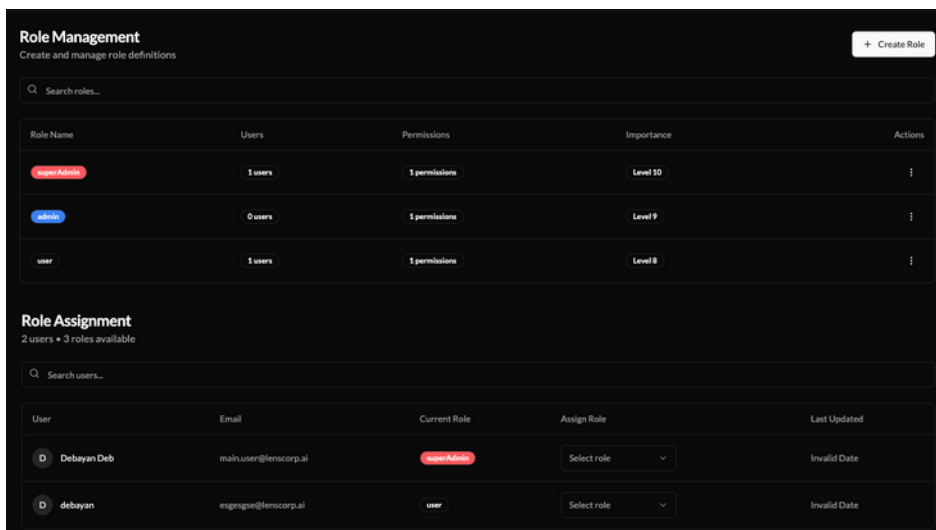
- Offers native 1:N failover management without relying on OS-level clustering.
- Automated health checks ensure VMS optimization & prevent functionality loss.
- Supports role-based security, real-time hardware monitoring, agent-free management, and automated updates.
- Add & manage multiple recording servers under the same management server.
- Supports multiple profiles for each user.
- Ensures seamless camera & workstation operation, independent of archive servers.
- Dynamically balances server-client loads for optimal performance.
- Supports client applications including system, web, video wall, & mobile clients.
- Supports login by username and password, also manages all user information, permissions, license, operation information and system information.
- Enhances security with 2FA and restricted audit log access.
- First-time login requires QR code-based sync.
- OTPs refresh every 30 seconds, time-synced.
- Supports user-specific camera and feature access with password protection.
- Enables admin-controlled camera operations & monitoring.
- Includes plug-ins for alarms, AVM, 360° and carousel cameras, diagnostics, help, image controls, monitoring, motion/person/text/thumbnail search, profile mapping, VCA visualization, web browsing, and zoom.



Full Product Specifications

Administration & System Management

- Role-based access with user restrictions, password expiry, and logout.
- Authenticates user validity via the system management server.
- Complete server logs capturing login access, system settings changes, archiving events, video/recording loss, and user activity.
- Help tab with full operational and software guidance.
- Provides configurable user privileges with independent rights saved in assignable profiles.
- Capture all edge-based analytics alarms supported by cameras and integrate them into the VMS alarm database, with full configuration options.
- Detailed System Administrator Permissions (User Group Role Management for Hardware & User Admin Rights)
- Includes end-user, system management, browser-based, and mobile client programs.
- Admin can assign user rights to access, modify, and manage plug-in roles.
- Supports 10 concurrent clients by default, expandable to 20 at no extra cost, with scalability for 50+ clients via separate licensing.
- Runs as a Windows service, managing operations, communication, authentication, logs, and system health.
- Client programs support up to 20 concurrent users & multiple profiles per user.



The screenshot displays two sections of the system's administration interface. The top section, 'Role Management', allows for creating and managing role definitions. It features a search bar and a table with columns for Role Name, Users, Permissions, Importance, and Actions. The bottom section, 'Role Assignment', shows 2 users and 3 roles available. It includes a search bar and a table with columns for User, Email, Current Role, Assign Role, and Last Updated.

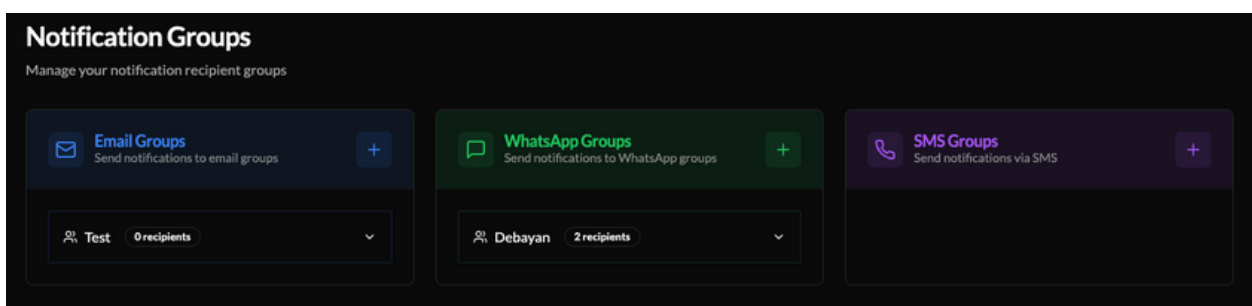
Role Name	Users	Permissions	Importance	Actions
Super Admin	1 users	1 permissions	Level 10	
Admin	0 users	1 permissions	Level 9	
User	1 users	1 permissions	Level 8	

User	Email	Current Role	Assign Role	Last Updated
Debyan Deb	main.user@lenscorp.ai	Super Admin	Select role	Invalid Date
debyan	engngse@lenscorp.ai	User	Select role	Invalid Date

Full Product Specifications

Administration & System Management

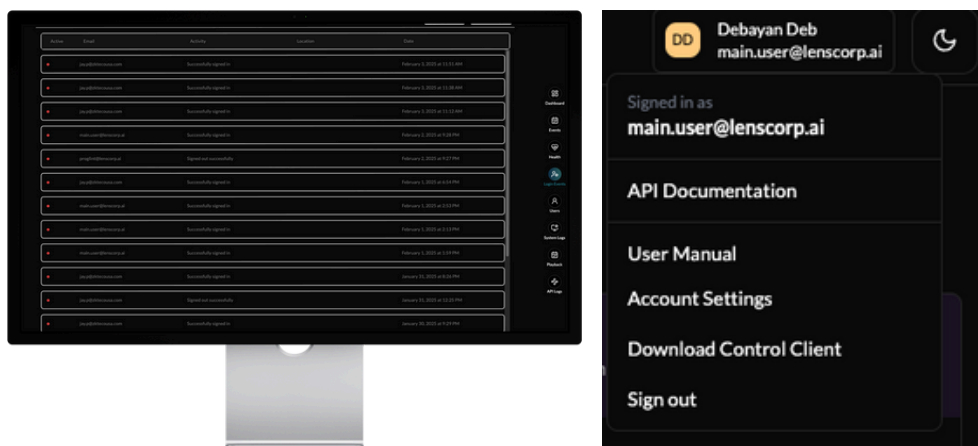
- Watchdog monitors VMS for issues like offline cameras, servers, and network loss, with alerts for external failures.
- Operates as a single-unit system with centralized management.
- Admins can grant users access to mixed mode and privacy masks.
- Automatic system notification removal once issues are resolved, ensuring accurate status.
- Daily backup of VMS configuration, allowing for easy restore in case of OS reinstallation.
- Configurable scheduled daily alarm reports with automatic email notifications to predefined recipients.
- Supports emails with username, email, user group, SMTP details, port, and credentials.
- Storyboard Feature (Create, Edit, Save, Share, and Export Video Sequences with Descriptions, Subtitles, & Playback Modes)
- Users can customize general, export, plug-in, alarm, stream, display, advanced, storyboard, and data cache settings.
- Supports recorder server backup and restore.
- Users can modify general, clip export, image export, plug-in, alarm, stream, display, advanced, storyboard export, and data cache settings.
- Admin can limit user access to playback streams from 1 minute to 24 hours.
- Allows changing cameras anytime without extra cost or license key updates.
- No online activation required for VMS operation.
- Supports a Dual Password Feature for administrators.
- Provides a detailed operations guide for users within the client software.



Full Product Specifications

Administration & System Management

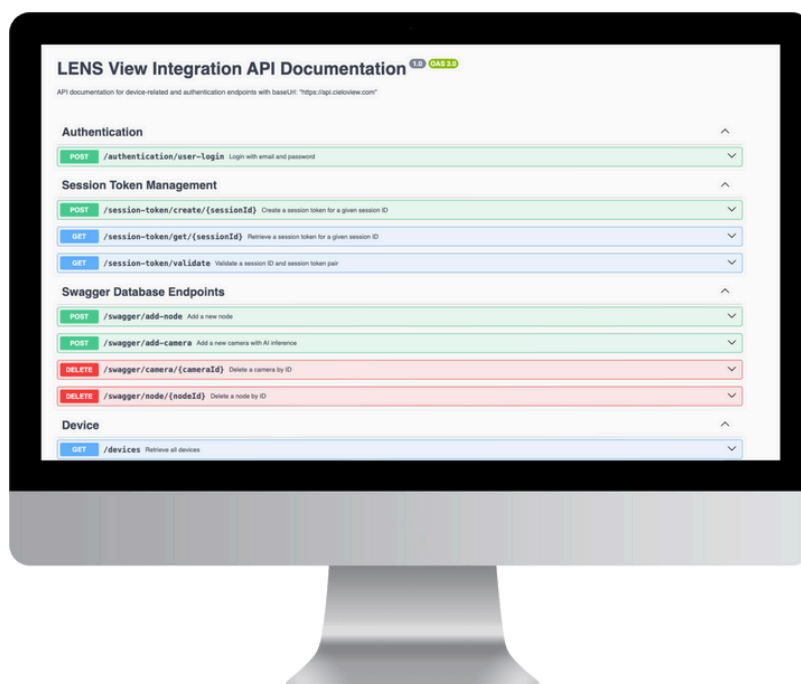
- Supports multiple Master Server connections and desktop shortcuts.
- Supports multiple sub-networks for cameras, VMS, clients, and storage.
- Supports all forms of IP network connectivity, including AN, WAN, VPN, Internet, and Wireless.
- Supports offline licensing management, with licenses valid for the hardware's lifetime unless the hardware or OS changes.
- Licensing requires only the server/recorder MAC ID, not cameras.
- VMS software licenses linked to computer hardware, allowing easy replacement of cameras without affecting the license.
- Lifetime-valid perpetual licensing provided.
- Supports an unlimited license model with no base licenses or standard channel modules.
- Supports instant device/camera replacement using the original IP, no reconfiguration needed.
- Server supports the expansion of the system to include multiple master recorders.
- Protects, detects, and recovers from cyber threats while ensuring secure boot and firmware integrity.
- Prevents unauthorized execution, tampering, and rollback attacks using a hardware-based Root of Trust.
- Client applications verify user validity via the system management server.



Full Product Specifications

Device and Camera Support

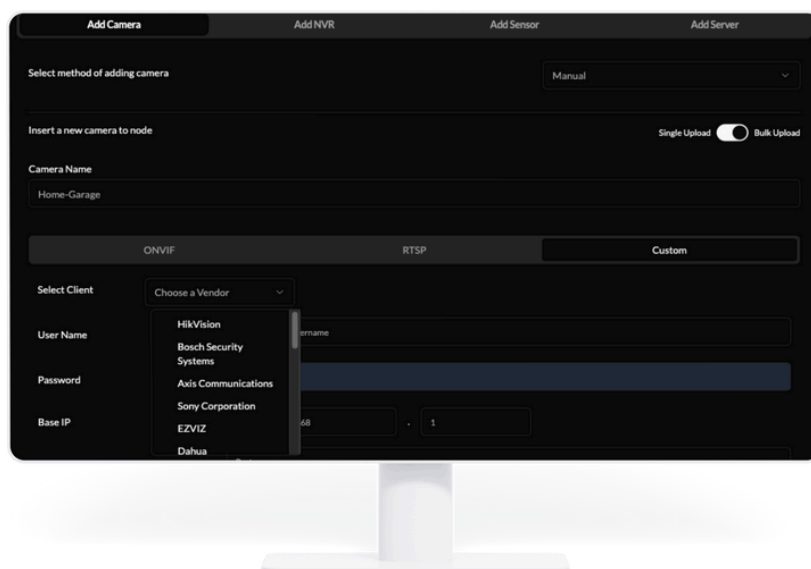
- Provides VMS software API/SDK for integration within ICCC scope.
- VMS software is compliant with data privacy laws, ensuring proper planning, design, and policy regulation for video surveillance systems.
- Support for advanced IP camera features like analytics overlays, heat maps, and face recognition.
- Integration with third-party analytics platforms.
- Integration with video, data, digital I/O, scheduled I/O, and logical I/O.
- Supports virtual cameras for integration with software-based video sources.
- Virtual Camera Support (Define Zoomed-In Views from Existing Cameras, Up to 45 Virtual Cameras Per Feed)
- Supports multi-site deployments with 24/7 surveillance and vendor-agnostic integration.
- Features an inbuilt Camera Audit facility that tracks camera order, name, shortcut, status, footage details, and reference images, with the ability to select one or multiple cameras for the audit summary.
- Allows audit summary includes camera name, audit image, status, comment, admin details, and exportable PDF file; it tracks the workstation accessing the record.



Full Product Specifications

Device and Camera Support

- Supports multiple brand IP cameras, encoders, and DVRs with no hardware restrictions.
- Camera KPIs available in Reports section.
- Camera uptime/downtime reporting available.
- Compatible with ONVIF protocols, including Profile-S, G, T, and M.
- Capable of integrating community surveillance cameras of any make and type that are ONVIF Profile S, G, M, and T certified.
- Scalable, cyber-resilient VMS with ONVIF S/G/T, 4096-bit RSA encryption, and SHA-384 hashing.
- Enables viewing and record retrieval capabilities from ICCV via edge gateway at no extra cost if required.
- Provides user-friendly menus for camera configurations & allows batch setting changes for similar cameras.
- Appliances are pre-loaded with the VMS, adhering to detailed VMS specifications.
- Holds ONVIF Contributor User membership, ensuring seamless third-party system integration.
- Scalable, client-server VMS supporting 5000+ cameras with seamless license and server expansion.



Full Product Specifications

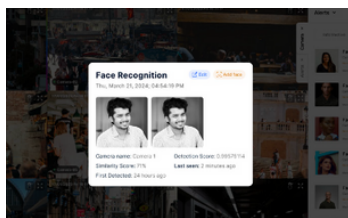
Device and Camera Support

- Locate devices within the viewing application with quick search functionality
- ONVIF Profile S, M, G & T conformant VMS, compatible with all camera brands.
- Supports at least 40 different camera makes. Below are some:
 - HIKVISION Digital Technology Co., Ltd.
 - Honeywell Commercial Security (Honeywell International Inc.)
 - CP PLUS GmbH & Co. KG (Aditya Infotech Ltd.)
 - Pelco Inc. (A Motorola Solutions Company)
 - Panasonic i-PRO Sensing Solutions Co., Ltd.
 - Avigilon Corporation (A Motorola Solutions Company)
 - Dahua Technology Co., Ltd.
 - Axis Communications AB
 - Bosch Security Systems
 - Hanwha Techwin Co., Ltd.
 - Intelbras S/A
 - Mobotix AG
 - Zhejiang Uniview Technologies Co., Ltd.
 - VIVOTEK Inc.
 - Huawei Technologies Co., Ltd.
 - IDIS Co., Ltd.
 - GeoVision Inc.
 - TVT Digital Technology Co., Ltd.
 - Milesight Technology Co., Ltd.
 - Sony Corporation
 - Merit LILIN Ent. Co., Ltd.
 - Tiandy Digital Technology Co., Ltd.
 - Sunell Technology Corporation
 - Micronet Communications Inc.
 - Moxa Inc.
 - ZKTeco Co., Ltd.
 - Toshiba Corporation
 - D-Link Corporation
 - Zavio Inc.
 - Brickcom Corporation
 - Grundig Security
 - NTIC CCTV
 - FLIR Systems, Inc.
 - Pixord Corporation
 - Truen Co., Ltd.
 - ACTi Corporation
 - Forenix
 - ICANTek Co., Ltd.
 - Sanyo Electric Co., Ltd.
 - Arecont Vision Costar, LLC
 - JVC Professional Products Company
 - Sparsh Security Solutions Pvt. Ltd

Full Product Specifications

Analytics Overview

- Supports inbuilt server-based 3D calibrated video analytics, performing real-time 3D scene reconstruction from multiple 2D camera feeds with auto-calibrated spatial accuracy within 5% error.
- Automatically determines camera positions in 3D space and scales from a single view to 16 simultaneous feeds without manual intervention.
- Supports Comparative, Adaptive & Hermeneutic motion detection for all conditions.
- Supports interactive 3D scene navigation with pan, tilt, zoom, and orbit.
- Automatically activates recording based on analytics-driven events.
- Handles a minimum of 100 cameras or more with analytics in one recorder.
- People Counting tracks visitor traffic with hourly, daily, weekly, and monthly analysis.
- Integrates advanced analytics, including intrusion, loitering, crowd, and unattended object detection, along with ANPR, face recognition, and human & vehicle detection for real-time security and threat prevention.



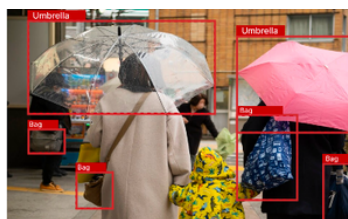
FACIAL RECOGNITION SYSTEM



FALL DETECTION



IMAGE SEGMENTATION



OBJECT CLASSIFICATION



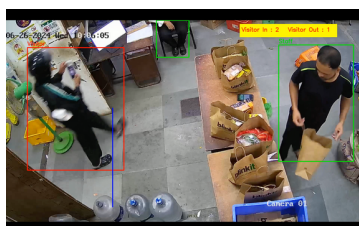
TRIPWIRE



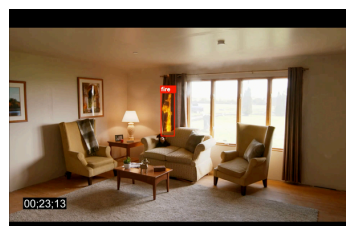
RUNNING DETECTION



AI-BASED
PICKPOCKET
DETECTION



CUSTOMER TAGGING AND MESSAGING



FIRE AND SMOKE DETECTION



INTRUSION DETECTION

Full Product Specifications

Hardware Requirements & Compatibility

- Supports high-performance Intel Xeon processors with multi-core processing.
- Operates efficiently with 64GB DDR4 RAM or higher.
- Supports RAID1 SSDs for OS and applications, ensuring reliability.
- Compatible with RAID6 storage up to 18 x 20TB HDDs (360TB+).
- Integrates with high-speed networks, supporting 2x 1G & 2x 10G ports.
- Ensures uptime with redundant hot-plug, FCC Class A certified power supplies.
- Compatible with a 2U Rack or better form factor for efficient hardware deployment.





EMBRACE THE DIGITAL AGE!

Start your digital transformation with **LENS**



(+91) 99907 36796



solutions@lenscorp.ai



www.lenscorp.ai